

PHILIPS

LCD monitor with
USB-C

Business Monitor

3000 series

27" (68.5 cm)

1920 x 1080 (Full HD)

27B2U3301



Redefining workflow productivity

Built for productivity, this 27-inch Full HD monitor with USB-C delivers smooth 120Hz performance. Together with SoftBlue technology featuring a Low Blue Light panel, it's designed for comfortable, focused viewing throughout the workday.

Designed for the way you work

- Built-in stereo speakers for multimedia
- SmartErgoBase enables people-friendly ergonomic adjustments
- Smart Link Sync: for uniform daisy-chained displays
- Eyesafe certified blue light protection and color accuracy
- D-Mode: Optimized for subtle grayscale perception
- SoftBlue Technology: for comfortable viewing
- Less eye fatigue with Flicker-free technology

Single cable USB-C connection

- Connect your notebook with one USB-C cable
- USB 3.2 high speed data transfer

Superb Picture Quality

- 120Hz refresh rates for ultra-smooth images
- 16:9 Full HD display for crisp detailed images
- IPS LED wide view technology for image and color accuracy

Business Monitor

LCD monitor with USB-C

27B2U3301/00

Highlights

Built-in stereo speakers



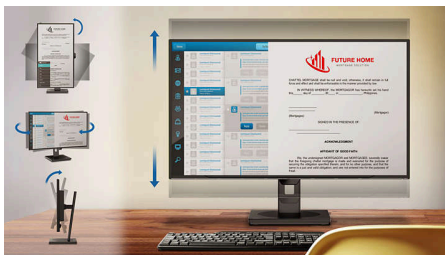
A pair of high quality stereo speakers built into a display device. It can be visible front firing, or invisible down firing, top firing, rear firing, etc depending on model and design.

USB-C connection



This Philips display features a USB type-C connector with power delivery. With intelligent and flexible power management, you can power charge your compatible device directly. Its slim, reversible USB-C allows for easy, one-cable connection. You can watch high resolution video and transfer data at a super-speed, while powering up and re-charging your compatible device at the same time.

SmartErgoBase



The SmartErgoBase is a monitor base that delivers ergonomic display comfort and provides cable management. The base can swivel, tilt and

rotate to various angles to ensure maximum comfort. The height adjustable stand guarantees the optimal viewing level, reducing the physical strains of a long workday, while cable management reduces cable clutter and keeps the workspace neat and professional.

Smart Link Sync



Easily create a seamless multi-monitor workspace with Smart Link Sync, designed to automatically align display settings across daisy-chained monitors. Whether you're designing, presenting, or multitasking, enjoy consistent brightness and color without manual tweaks. Choose from OSD Sync or Light Sync modes (Low, Mid, or High) on the primary monitor to match your environment. For identical monitors, any mode ensures uniform visuals; for mixed models, Light Sync intelligently adjusts luminance for a balanced, professional look across screens.

120Hz Fast refresh



The smoother the motion, the less strain on your eyes. This Philips monitor is equipped with an improved 120Hz refresh rate. Whenever you scroll, switch between applications, or navigate complex spreadsheets, you experience smoother and more precise movements. That means you

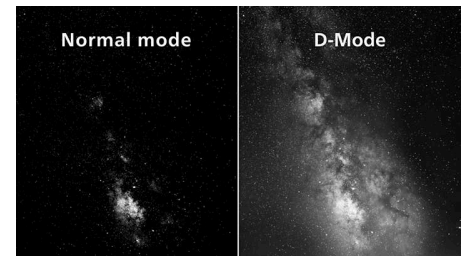
can work as long as you need with minimal visual fatigue—all while increasing the speed of your workflow.

eyesafe® CERTIFIED 2.0 (RPF 40)



The Philips display meets the eyesafe® CERTIFIED 2.0 standard to truly protect you from the long exposure to blue light. The always-on blue light filter not only helps reduce digital eye strain, but also guarantees color integrity.

D-Mode



Reveal every hidden detail in the dark-toned areas of your display. D-Mode enhances grayscale detail to make subtle tonal differences easier to see. Based on the grayscale perception model defined by the DICOM Part 14 GSDF standard, it improves the visibility of details that standard display settings may miss. The result is clearer differentiation between subtle shades and improved detail visibility in grayscale content such as technical illustrations, scans, and other high-detail imagery.

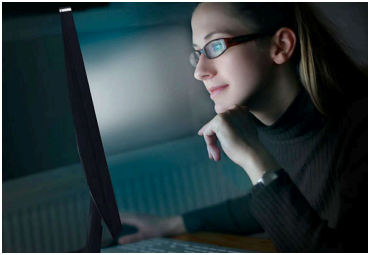
High speed data transfer

USB 3.2 high speed data transfer



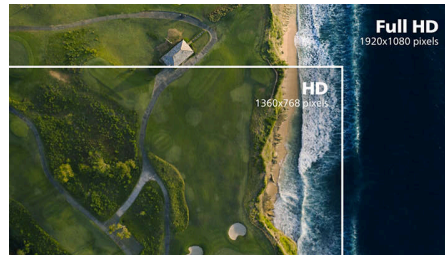
Highlights

SoftBlue Technology with Low Blue Light Panel



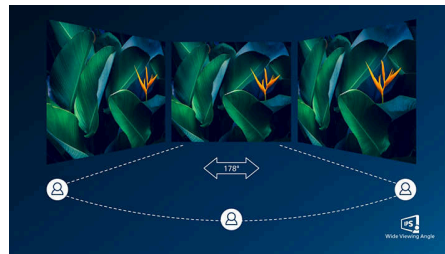
SoftBlue technology offers increased visual comfort and protection against adverse health effects caused by prolonged exposure to blue light. With the low blue-light panel, the ratio of display emission light in the range of 415-455 nm to 400-500nm is reduced to less than 50%. As a result, the SoftBlue technology provides optimal visual comfort, minimizes eye strain, and supports sustained focus. Not to mention, SoftBlue LED technology is tested and TÜV Rheinland Low Blue Light (Hardware Solution) certified for its effectiveness in reducing blue light emissions.

16:9 Full HD display



Picture quality matters. Regular displays deliver quality, but you expect more. This display features enhanced Full HD 1920 x 1080 resolution. With Full HD for crisp detail paired with high brightness, incredible contrast and realistic colors expect a true to life picture.

IPS technology



IPS displays use an advanced technology which gives you extra wide viewing angles of 178/178 degree, making it possible to view the display

from almost any angle. Unlike standard TN panels, IPS displays gives you remarkably crisp images with vivid colors, making it ideal not only for Photos, movies and web browsing, but also for professional applications which demand color accuracy and consistent brightness at all times.

Flicker-free technology



Due to the way brightness is controlled on LED-backlit screens, some users experience flicker on their screen which causes eye fatigue. Philips Flicker-free Technology applies a new solution to regulate brightness and reduce flicker for more comfortable viewing.



Specifications

Picture/Display

Panel Size: 27 inch / 68.5 cm
Aspect ratio: 16:9
LCD panel type: IPS technology
Backlight type: W-LED system
Pixel pitch: 0.3114 (H)mm x 0.3114 (V)mm
Optimum resolution: 1920x1080@60Hz
Brightness: 350 cd/m²
Display colors: 16.7M (8 bits)
Color gamut (typical): sRGB 99.1% , NTSC 91.21% *
Contrast ratio (typical): 1500:1
SmartContrast: 50,000,000:1
Response time (typical): 4 ms (Gray to Gray)*
Viewing angle: 178° (H) / 178° (V), @ C/R > 10
Picture enhancement: SmartImage
Maximum resolution: 1920x1080@120Hz (HDMI/DP/USB-C)*
Effective viewing area: 597.89(H)x 336.31(V) mm
Scanning Frequency: 30-230 KHz (H) / 48 -120 Hz (V)
sRGB
SoftBlue
Flicker-free
Pixel Density: 82 PPI
Display Screen Coating: Anti-Glare, 3H, Haze 25%
EasyRead
Adaptive sync (VRR)
EyeSafe
Smart Link Sync: When used as a primary or secondary monitor*
DICOM (D-mode)

Connectivity

Signal Input: HDMI 1.4 x 1, DisplayPort 1.4 x 1, USB-C x 1 (upstream, DP Alt mode, Data, PD)
Sync Input: Separate Sync, Sync on Green
Audio (In/Out): Audio out
HDCP: 1.4/2.3 (HDMI/DP/USB-C)
HBR3: Yes (DP,USB-C)
USB Hub: USB3.2, Gen1, 5G, Upstream: USB-C x1 (full); Downstream: USB-A x3 (with x1 fast charge B.C 1.2), USB-C x1 (data, 15W)

Power Delivery

Max power delivery: up to 90W (5V/3A, 7V/3A, 9V/3A, 10V/3A, 12V/3A, 15V/3A, 20V/4.5A)
Version: USB PD version 3.0

Convenience

Built-in Speakers: 2W x 2
Plug & Play Compatibility: DDC/CI, Mac OS, sRGB, Windows 11 / 10
User convenience: SmartImage, Input, Brightness, Menu, Power On/Off
OSD Languages: Brazil Portuguese, Czech, Dutch, English, French, Finnish, German, Greek, Hungarian, Italian, Japanese, Korean, Portuguese, Polish, Russian, Simplified Chinese, Spanish, Swedish, Traditional Chinese, Turkish, Ukrainian
Other convenience: Kensington lock, VESA mount (100x100mm)
Control software: SmartControl

Stand

Height adjustment: 150 mm
Pivot: -/+90 degree
Swivel: -/+180 degree
Tilt: -5/30 degree

Power

ECO mode: 13.8 W (typ.)
Power supply: Built-in, 100-240VAC, 50-60Hz
Off mode: 0.3W (typ)
On mode: 24.73 (typ.) (EnergyStar test method)
Standby mode: 0.35 W (typ)
Power LED indicator: Operation - White, Standby mode- White (blinking)
Energy Label Class: D

Dimensions

Packaging in mm (WxHxD): 730 x 445 x 139 mm
Product without stand (mm): 615 x 361 x 46 mm
Product with stand(max height): 615 x 540 x 229 mm

Weight

Product with packaging (kg): 8.98 kg
Product with stand (kg): 6.42 kg
Product without stand (kg): 4.42 kg

Operating conditions

Altitude: Operation: +12,000ft (3,658m), Non-operation: +40,000ft (12,192m)
Temperature range (operation): 0°C to 40 °C
Relative humidity: 20%-80 %
Temperature range (storage): -20°C to 60 °C
MTBF (demonstrated): 70,000 hrs (excluded backlight)

Sustainability

Environmental and energy: EnergyStar 8.0, EPEAT*, RoHS, Mercury Free
Post consumer recycled plastic: 85%
Recyclable packaging material: 100 %
Specific Substances: PVC / BFR free housing

Compliance and standards

Regulatory Approvals: CE Mark, FCC, WEEE, South Africa Energy, EnergyStar 8.0, CEC, cETLus, CB, TUV/GS, TUV Ergo, TCO Certified, TCO Certified Edge, EAC, TÜV Rheinland Low Blue Light (Hardware Solution), eyesafe® CERTIFIED 2.0, EAC ROHS, UKCA, ICES-003, EMF

Cabinet

Finish: Texture
Foot: Black
Front bezel: Black
Rear cover: Black

What's in the box?

Cables: HDMI cable / DP cable / USB-C to C cable / Power cable
Monitor with stand
User Documentation



* "IPS" word mark / trademark and related patents on technologies belong to their respective owners.
* Response time value equal to SmartResponse
* sRGB area based on CIE 1931, NTSC area based on CIE 1976
* EPEAT rating is valid only where Philips registers the product. Please visit <https://www.epeat.net/> for registration status in your country.
* USB-C High Resolution mode enables a maximum resolution of 2560x1440 at 120Hz.
* For Smart Link Sync to function properly, all daisy-chained monitors must be compatible with Smart Link.
* The monitor may look different from feature images.
* The products and accessories listed on this leaflet may differ by country and region.
* The cable(s) supplied with the product may vary in type, quantity, and specifications in line with country- or region-specific requirements.